

Giro  
Central module,  
by Vincent Van Duysen

**kettal**

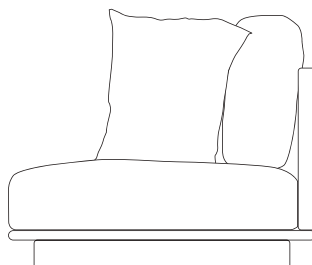
# Central module

Designer  
Vincent Van Duysen

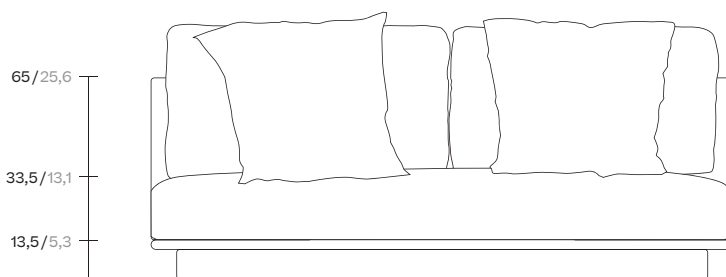
Collection  
Giro

Reference  
KS7400800

1/3



cm/inch |----- 95/37,4 -----|



65/25,6  
33,5/13,1  
13,5/5,3

cm/inch |----- 180/70,8 -----|

Giro is a collection which can blend into interiors and exteriors due to its tactility and pure lines. In Giro, we have some variety of shapes, textures and materials (see the difference between the seating items and the coffee and side tables). And still all the items merge harmoniously together to create a warm, tactile and pleasant atmosphere.



kettal

# Central module

Designer  
Vincent Van Duysen

Collection  
Giro

Reference  
KS7400800

2/3

## Materials

**Teak**  
Teak A-Grade, Eco Friendly  
Oeko-Tek

**Stipa Fabric**  
Antioxy, Resist U.V, En-581-4, Easy  
Clean

**Terrain Elements**  
100% Fire Retardant Dyed  
Acrylic, IMO FTP Code 2010  
Part 8, Abrasion resistance  
(Martindale) 60.000 cycles,  
Fluorocarbon-free water  
repellent finish Mildew, chlorine  
and seawater resistant

**Tonale Lino**  
100% Solution Dyed Acrylic, Fire  
retardant IMO FTP Code 2010  
Part 8

**Tonale Boucle**  
60% Solution Dyed Acrylic 40%  
polyester Fire retardant IMO FTP  
Code 2010 Part 8

## Maintenance

Clean with mild soap using  
sponge or cloth. Be gentle  
while cleaning, do not scrub  
aggressively the fabric. Once  
cleaned please make sure you  
remove soap excess.

In case of aggressive stains  
clean with diluted household  
bleach.

Clean stains promptly. The  
longer it remains, more difficult  
will be to remove.

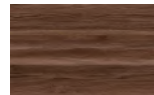
Once cleaned the fabric steam  
iron the fabric. Just use steam,  
be carefull NOT placing the  
iron directly in the fabric it will  
get damage.

## Frame Colour Options

Teak



Teak



Cinnamon  
Teak

## Fabric Colour Options

Soga A



New Dawn  
455



Chestnut  
475

## Fabric Colour Options

Soga B



Woodland  
485



Ivy  
465

## Seat/Back Cushion

Tonale Lino



Alba  
51L-51T



Mist  
52L-52T



Mud Rain  
53L-53T



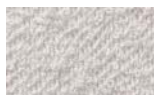
Haboob  
54L-54T



Sunstruck  
55L-55T

## Seat/Back Cushion

Tonale Boucle



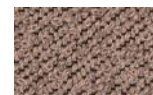
Alba  
71L-71T



Mist  
77L-77T



Haboob  
72L-72T



Afterglow  
73L-73T



Sunstruck  
74L-74T



Aurora  
75L-75T



Storm  
76L-76T

# Central module


Designer  
Vincent Van Duysen

Collection  
Giro

Reference  
KS7400800

3/3

## Other Characteristics

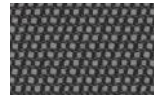
 Adjustable Legs

## Seat/Back Cushion

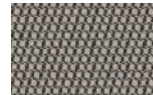
## Terrain Laminate Elements



Charcoal  
01L



Cumulus  
02L



Fog  
09L



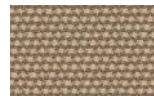
Porous Grey  
08L



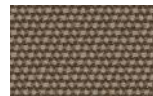
Snowcap  
03L



Moonstone  
07L



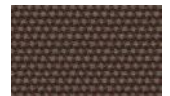
Karakum  
06L



Cambium  
12L



Raku  
11L



Clove  
13L



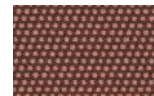
Desert Rose  
14L



Pink Salt  
15L



Pacific Dawn  
16L



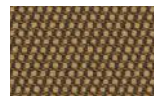
Acer  
17L



Firetail  
18L



Glowing Ember  
19L



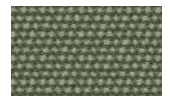
Tiger Eye  
05L



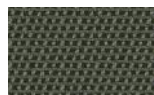
Goldrush  
04L



Sea Heart  
22L



Heath  
21L



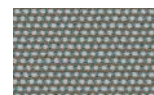
Peppercorn  
20L



Rock Pool  
23L



Tropic  
24L



Skylark  
25L



Nautica  
26L



Blue Reef  
27L



Cosmos  
28L



Amethyst  
29L

Giro

Left corner module,  
by Vincent Van Duysen

**kettal**

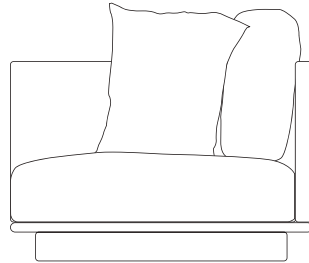
# Left corner module

Designer  
Vincent Van Duysen

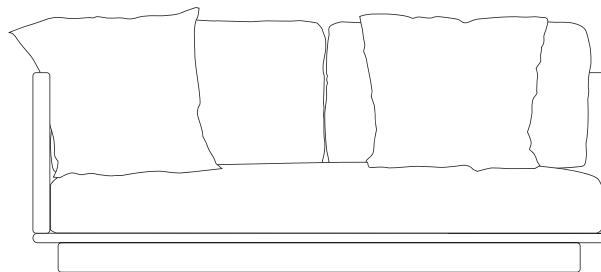
Collection  
Giro

Reference  
KS7400600

1/3



cm/inch |----- 95/37,4 -----|



65/25,6

33,5/13,1

13,5/5,3

cm/inch |----- 180/70,8 -----|

Giro is a collection which can blend into interiors and exteriors due to its tactility and pure lines. In Giro, we have some variety of shapes, textures and materials (see the difference between the seating items and the coffee and side tables). And still all the items merge harmoniously together to create a warm, tactile and pleasant atmosphere.



kettal

# Left corner module

Designer  
Vincent Van Duysen

Collection  
Giro

Reference  
KS7400600

2/3

## Materials

Teak  
Teak A-Grade, Eco Friendly  
Oeko-Tek

Stipa Fabric  
Antioxy, Resist U.V, En-581-4, Easy  
Clean

Terrain Elements  
100% Fire Retardant Dyed  
Acrylic, IMO FTP Code 2010  
Part 8, Abrasion resistance  
(Martindale) 60.000 cycles,  
Fluorocarbon-free water  
repellent finish Mildew, chlorine  
and seawater resistant

Tonale Lino  
100% Solution Dyed Acrylic, Fire  
retardant IMO FTP Code 2010  
Part 8

Tonale Boucle  
60% Solution Dyed Acrylic 40%  
polyester Fire retardant IMO FTP  
Code 2010 Part 8

## Maintenance

Clean with mild soap using  
sponge or cloth. Be gentle  
while cleaning, do not scrub  
aggressively the fabric. Once  
cleaned please make sure you  
remove soap excess.

In case of aggressive stains  
clean with diluted household  
bleach.

Clean stains promptly. The  
longer it remains, more difficult  
will be to remove.

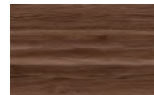
Once cleaned the fabric steam  
iron the fabric. Just use steam,  
be carefull NOT placing the  
iron directly in the fabric it will  
get damage.

## Frame Colour Options

Teak



Teak



Cinnamon  
Teak

## Fabric Colour Options

Soga A



New Dawn  
455



Chestnut  
475

## Fabric Colour Options

Soga B



Woodland  
485



Ivy  
465

## Seat/Back Cushion

Tonale Lino



Alba  
51L-51T



Mist  
52L-52T



Mud Rain  
53L-53T



Haboob  
54L-54T



Sunstruck  
55L-55T

## Seat/Back Cushion

Tonale Boucle



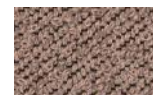
Alba  
71L-71T



Mist  
77L-77T



Haboob  
72L-72T



Afterglow  
73L-73T



Sunstruck  
74L-74T



Aurora  
75L-75T



Storm  
76L-76T



# Left corner module


Designer  
Vincent Van Duysen

Collection  
Giro

Reference  
KS7400600

3/3

## Other Characteristics

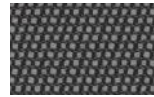
 Adjustable Legs

## Seat/Back Cushion

## Terrain Laminate Elements



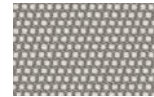
Charcoal  
01L



Cumulus  
02L



Fog  
09L



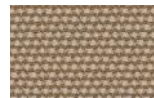
Porous Grey  
08L



Snowcap  
03L



Moonstone  
07L



Karakum  
06L



Cambium  
12L



Raku  
11L



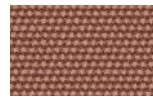
Clove  
13L



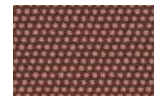
Desert Rose  
14L



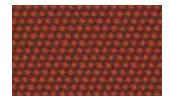
Pink Salt  
15L



Pacific Dawn  
16L



Acer  
17L



Firetail  
18L



Glowing Ember  
19L



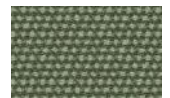
Tiger Eye  
05L



Goldrush  
04L



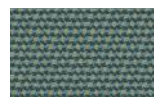
Sea Heart  
22L



Heath  
21L



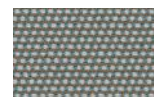
Peppercorn  
20L



Rock Pool  
23L



Tropic  
24L



Skylark  
25L



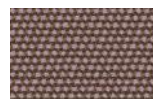
Nautica  
26L



Blue Reef  
27L



Cosmos  
28L



Amethyst  
29L



Giro  
Right corner  
connection module,  
by Vincent Van Duysen

**kettal**

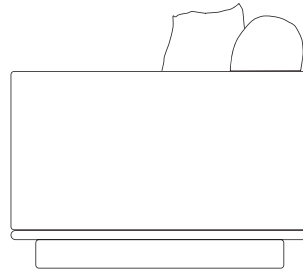
# Right corner connection module

Designer  
Vincent Van Duysen

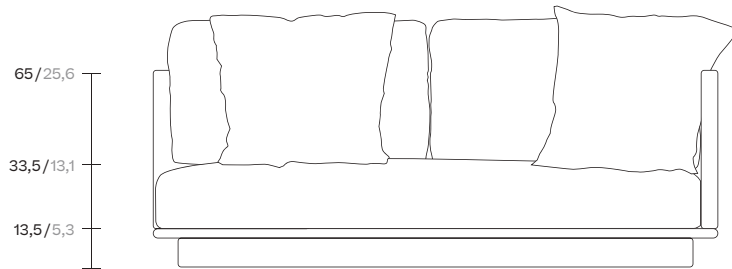
Collection  
Giro

Reference  
KS7401900

1/3



cm/inch |----- 95/37,4 -----|



65/25,6

33,5/13,1

13,5/5,3

cm/inch |----- 180/70,8 -----|

Giro is a collection which can blend into interiors and exteriors due to its tactility and pure lines. In Giro, we have some variety of shapes, textures and materials (see the difference between the seating items and the coffee and side tables). And still all the items merge harmoniously together to create a warm, tactile and pleasant atmosphere.



kettal

# Right corner connection module

Designer  
Vincent Van Duysen

Collection  
Giro

Reference  
KS7401900

2/3

## Materials

Teak  
Teak A-Grade, Eco Friendly  
Oeko-Tek

Stipa Fabric  
Antioxy, Resist UV, En-581-4, Easy  
Clean

Terrain Elements  
100% Fire Retardant Dyed  
Acrylic, IMO FTP Code 2010  
Part 8, Abrasion resistance  
(Martindale) 60.000 cycles,  
Fluorocarbon-free water  
repellent finish Mildew, chlorine  
and seawater resistant

Tonale Lino  
100% Solution Dyed Acrylic, Fire  
retardant IMO FTP Code 2010  
Part 8

Tonale Boucle  
60% Solution Dyed Acrylic 40%  
polyester Fire retardant IMO FTP  
Code 2010 Part 8

## Maintenance

Clean with mild soap using  
sponge or cloth. Be gentle  
while cleaning, do not scrub  
aggressively the fabric. Once  
cleaned please make sure you  
remove soap excess.

In case of aggressive stains  
clean with diluted household  
bleach.

Clean stains promptly. The  
longer it remains, more difficult  
will be to remove.

Once cleaned the fabric steam  
iron the fabric. Just use steam,  
be carefull NOT placing the  
iron directly in the fabric it will  
get damage.

## Frame Colour Options

Teak



Teak



Cinnamon  
Teak

## Fabric Colour Options

Soga A



New Dawn  
455



Chestnut  
475

## Fabric Colour Options

Soga B



Woodland  
485



Ivy  
465

## Seat/Back Cushion

Tonale Lino



Alba  
51L-51T



Mist  
52L-52T



Mud Rain  
53L-53T



Haboob  
54L-54T



Sunstruck  
55L-55T

## Seat/Back Cushion

Tonale Boucle



Alba  
71L-71T



Mist  
77L-77T



Haboob  
72L-72T



Afterglow  
73L-73T



Sunstruck  
74L-74T



Aurora  
75L-75T



Storm  
76L-76T

# Right corner connection module


Designer  
Vincent Van Duysen

Collection  
Giro

Reference  
KS7401900

3/3

## Other Characteristics

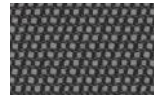
 Adjustable Legs

## Seat/Back Cushion

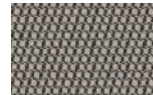
## Terrain Laminate Elements



Charcoal  
01L



Cumulus  
02L



Fog  
09L



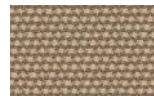
Porous Grey  
08L



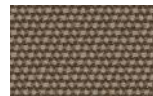
Snowcap  
03L



Moonstone  
07L



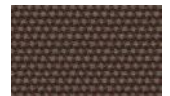
Karakum  
06L



Cambium  
12L



Raku  
11L



Clove  
13L



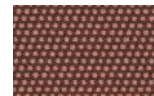
Desert Rose  
14L



Pink Salt  
15L



Pacific Dawn  
16L



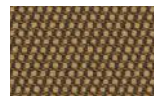
Acer  
17L



Firetail  
18L



Glowing Ember  
19L



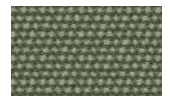
Tiger Eye  
05L



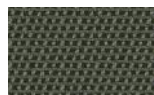
Goldrush  
04L



Sea Heart  
22L



Heath  
21L



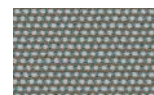
Peppercorn  
20L



Rock Pool  
23L



Tropic  
24L



Skylark  
25L



Nautica  
26L



Blue Reef  
27L



Cosmos  
28L



Amethyst  
29L

Giro  
Right corner module,  
by Vincent Van Duysen

**kettal**

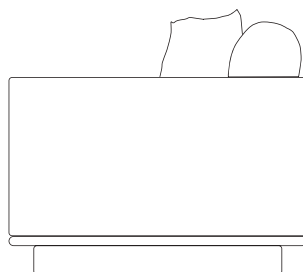
# Right corner module

Designer  
Vincent Van Duysen

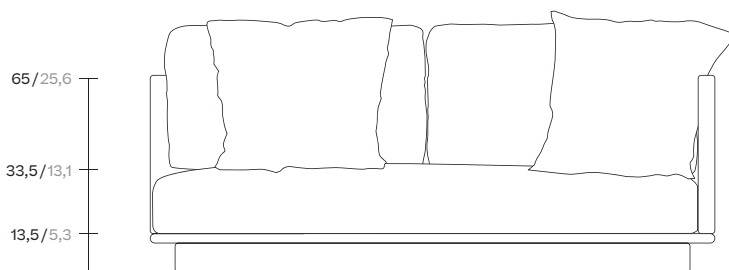
Collection  
Giro

Reference  
KS7400700

1/3



cm/inch |----- 95/37,4 -----|



65/25,6

33,5/13,1

13,5/5,3

cm/inch |----- 180/70,8 -----|

Giro is a collection which can blend into interiors and exteriors due to its tactility and pure lines. In Giro, we have some variety of shapes, textures and materials (see the difference between the seating items and the coffee and side tables). And still all the items merge harmoniously together to create a warm, tactile and pleasant atmosphere.



kettal

# Right corner module

Designer  
Vincent Van Duysen

Collection  
Giro

Reference  
KS7400700

2/3

## Materials

Teak  
Teak A-Grade, Eco Friendly  
Oeko-Tek

Stipa Fabric  
Antioxy, Resist UV, En-581-4, Easy  
Clean

Terrain Elements  
100% Fire Retardant Dyed  
Acrylic, IMO FTP Code 2010  
Part 8, Abrasion resistance  
(Martindale) 60.000 cycles,  
Fluorocarbon-free water  
repellent finish Mildew, chlorine  
and seawater resistant

Tonale Lino  
100% Solution Dyed Acrylic, Fire  
retardant IMO FTP Code 2010  
Part 8

Tonale Boucle  
60% Solution Dyed Acrylic 40%  
polyester Fire retardant IMO FTP  
Code 2010 Part 8

## Maintenance

Clean with mild soap using  
sponge or cloth. Be gentle  
while cleaning, do not scrub  
aggressively the fabric. Once  
cleaned please make sure you  
remove soap excess.

In case of aggressive stains  
clean with diluted household  
bleach.

Clean stains promptly. The  
longer it remains, more difficult  
will be to remove.

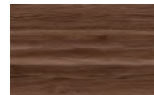
Once cleaned the fabric steam  
iron the fabric. Just use steam,  
be carefull NOT placing the  
iron directly in the fabric it will  
get damage.

## Frame Colour Options

Teak



Teak



Cinnamon  
Teak

## Fabric Colour Options

Soga A



New Dawn  
455



Chestnut  
475

## Fabric Colour Options

Soga B



Woodland  
485



Ivy  
465

## Seat/Back Cushion

Tonale Lino



Alba  
51L-51T



Mist  
52L-52T



Mud Rain  
53L-53T



Haboob  
54L-54T



Sunstruck  
55L-55T

## Seat/Back Cushion

Tonale Boucle



Alba  
71L-71T



Mist  
77L-77T



Haboob  
72L-72T



Afterglow  
73L-73T



Sunstruck  
74L-74T



Aurora  
75L-75T



Storm  
76L-76T



# Right corner module


Designer  
Vincent Van Duysen

Collection  
Giro

Reference  
KS7400700

3/3

## Other Characteristics

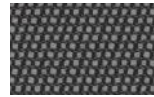
 Adjustable Legs

## Seat/Back Cushion

## Terrain Laminate Elements



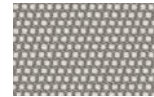
Charcoal  
01L



Cumulus  
02L



Fog  
09L



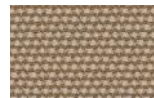
Porous Grey  
08L



Snowcap  
03L



Moonstone  
07L



Karakum  
06L



Cambium  
12L



Raku  
11L



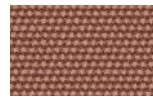
Clove  
13L



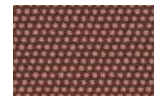
Desert Rose  
14L



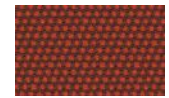
Pink Salt  
15L



Pacific Dawn  
16L



Acer  
17L



Firetail  
18L



Glowing Ember  
19L



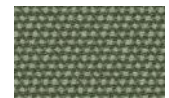
Tiger Eye  
05L



Goldrush  
04L



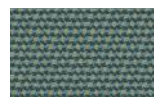
Sea Heart  
22L



Heath  
21L



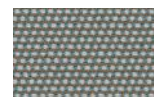
Peppercorn  
20L



Rock Pool  
23L



Tropic  
24L



Skylark  
25L



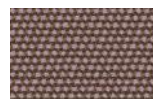
Nautica  
26L



Blue Reef  
27L



Cosmos  
28L



Amethyst  
29L