

Giro
Low Side table,
by Vincent Van Duysen

kettal

Low Side table

Designer
Vincent Van Duysen

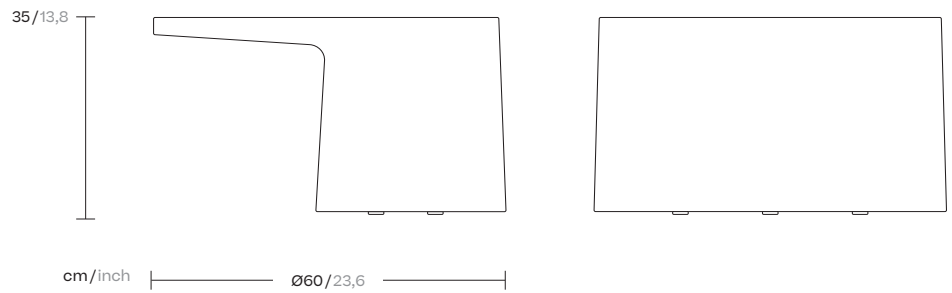
Collection
Giro

Reference
KS7400900

1/2

Giro is a collection which can blend into interiors and exteriors due to its tactility and pure lines. In Giro, we have some variety of shapes, textures and materials (see the difference between the seating items and the coffee and side tables). And still all the items merge harmoniously together to create a warm, tactile and pleasant atmosphere.

cm/inch



kettal

Low Side table

Designer
Vincent Van Duysen

Collection
Giro

Reference
KS7400900

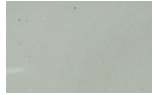
2/2

Materials

Concrete
Resist U.V., X-Temperature,
Strong

Colour Options

Minera Stone



Antique Rose
MI3

Maintenance

Clean with mild soap using sponge or cloth. Be gentle while cleaning, do not scrub aggressively the fabric. Once cleaned please make sure you remove soap excess.

In case of aggressive stains clean with diluted household bleach.

Clean stains promptly. The longer it remains, more difficult will be to remove.

Once cleaned the fabric steam iron the fabric. Just use steam, be careful NOT placing the iron directly in the fabric it will get damage.

Giro
High Side table,
by Vincent Van Duysen

kettal

High Side table

Designer
Vincent Van Duysen

Collection
Giro

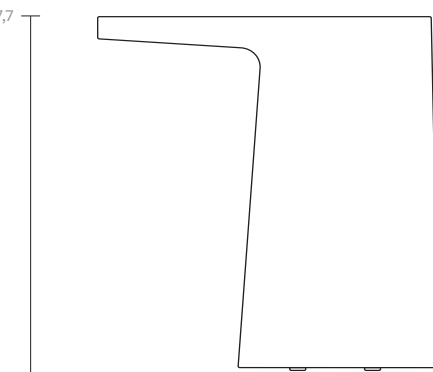
Reference
KS7401000

1/2

Giro is a collection which can blend into interiors and exteriors due to its tactility and pure lines. In Giro, we have some variety of shapes, textures and materials (see the difference between the seating items and the coffee and side tables). And still all the items merge harmoniously together to create a warm, tactile and pleasant atmosphere.

cm/inch

45/17,7



cm/inch

Ø45/17,7



kettal

High Side table

Designer
Vincent Van Duysen

Collection
Giro

Reference
KS7401000

2/2

Materials

Concrete
Resist U.V., X-Temperature,
Strong

Colour Options

Minera Stone



Antique Rose
MI3

Maintenance

Clean with mild soap using sponge or cloth. Be gentle while cleaning, do not scrub aggressively the fabric. Once cleaned please make sure you remove soap excess.

In case of aggressive stains clean with diluted household bleach.

Clean stains promptly. The longer it remains, more difficult will be to remove.

Once cleaned the fabric steam iron the fabric. Just use steam, be careful NOT placing the iron directly in the fabric it will get damage.