



ITALIAN
TERRACE



All
gardening is
landscape
painting

William Kent

Welcome

Contents

Page 3	Oil Jars
page 15	Vases
page 43	Plaques
page 47	Etc Etc
page 52	Handmade
Page 54	Bespoke
page 56	Pot Care
page 58	The Small Print
page 61	Index

When you see a terracotta pot made by Italian Terrace you almost have a feeling of déjà vu; recognising the texture and weight, the definition and finish all normally associated with antique specimens, not the newly made. These terracotta masterpieces are not reproductions; they are simply the real thing. The designs and shapes suit classical or contemporary architecture and are made with the growth of plants in mind.

Italian Terrace uses a blend of the finest Italian clay resulting in a pale organic colour, and finished to achieve a weathered texture. Italian Terrace pots bear no relation to the harsh, bitter-red machine produced imitations. Each pot takes over four weeks to hand make using traditional press moulded techniques. Gentle air-drying precedes high temperature firing in modern gas kilns ensuring, along with proper care, strength and durability throughout the year.

Our pots provide the perfect punctuation at the end of a long view, add importance to an entrance and informality when grouped and seasonally planted.



Terracotta oil jars had important use throughout Italian history to store and transport olives, oil and wine. Very large amphora were crafted with handles so that long poles could be slotted through – rather like a sedan chair – to ease moving when full.

Today we appreciate the beauty of this functional design by using an oil jar to create an impressive focal point in the garden or adapting an urn to contain water for a unique feature on the terrace.

Oil Jars

*We can complain
because rose bushes
have thorns,
or rejoice because
thorn bushes
have roses.*

Abraham Lincoln



COPPA ROMANA MANICI 163

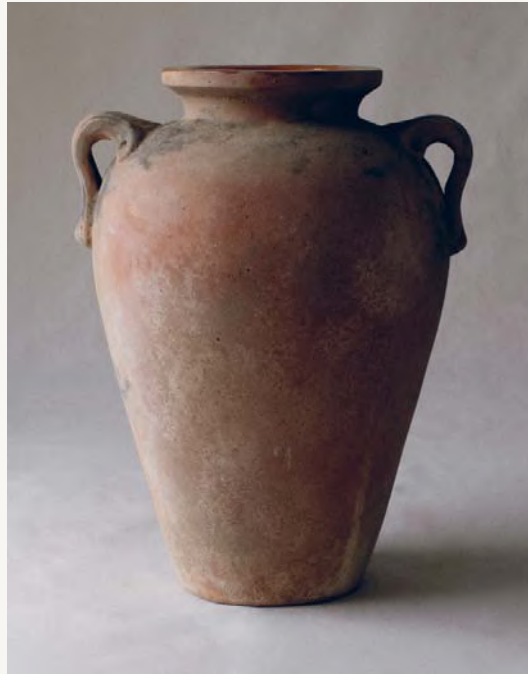


CAN BE CONVERTED TO LAMPBASE

W 45cm
H 60cm

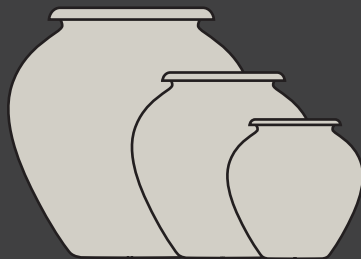


ORCIO ROMANO MANICI 102



W 50cm
H 70cm





ORCIO TOSCANO LISCIO 162

W 80cm
H 90cm

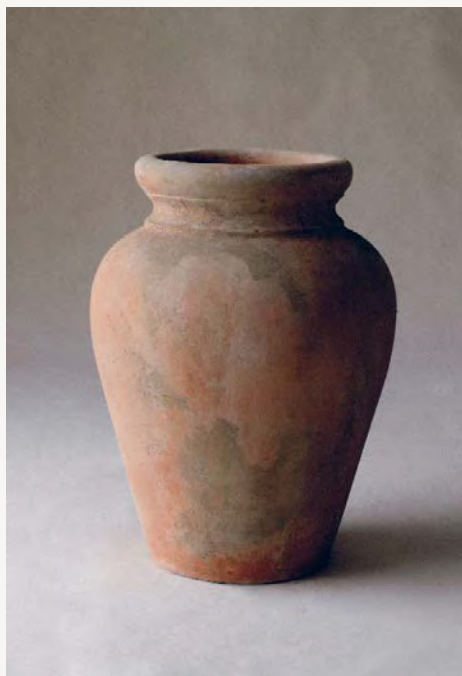
W 70cm
H 75cm

W 50cm
H 60cm



PORTAOMBRELLO 114

PRIMAVERA 109



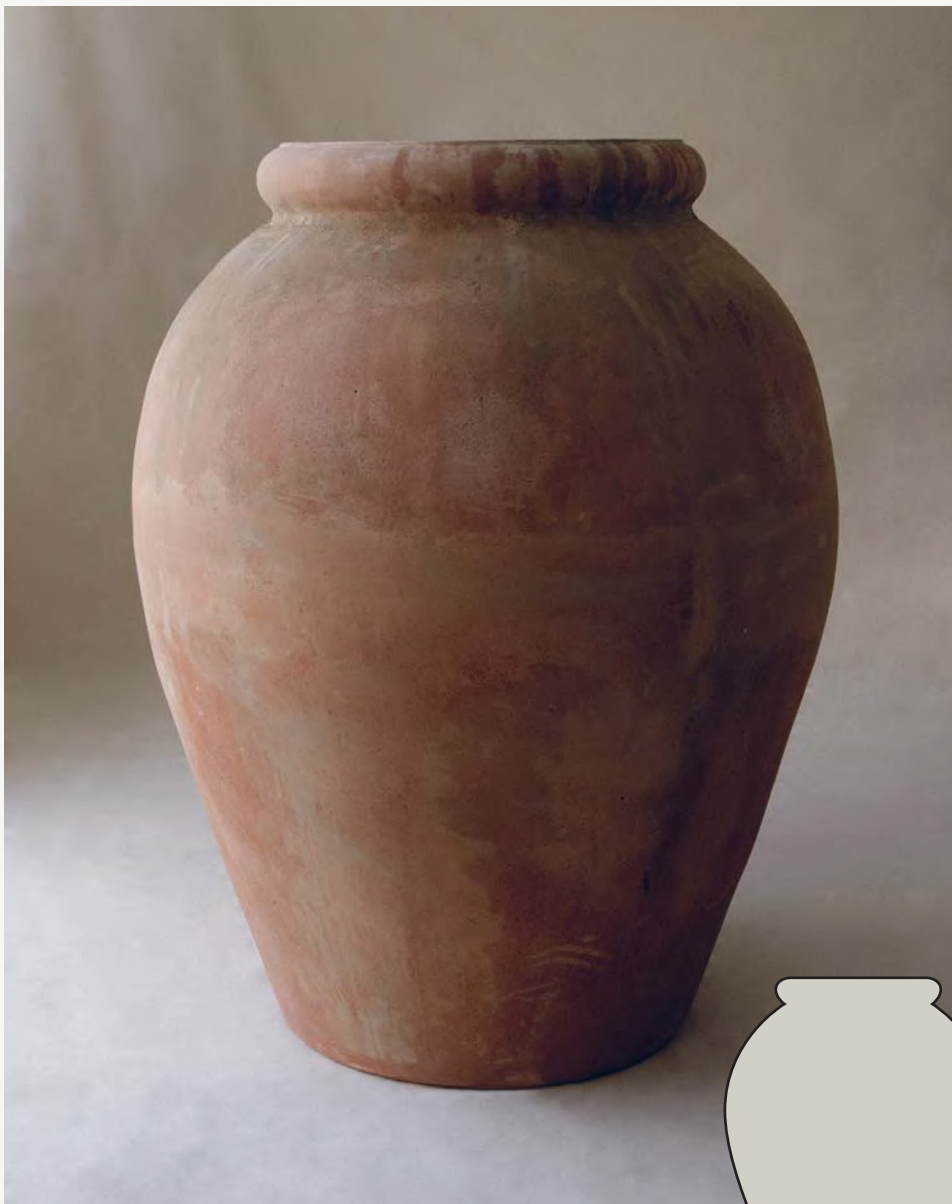
W 38cm
H 52cm



W 60cm
H 40cm



ORCIO GRANDE LISCIO 216



W 100cm
H 125cm

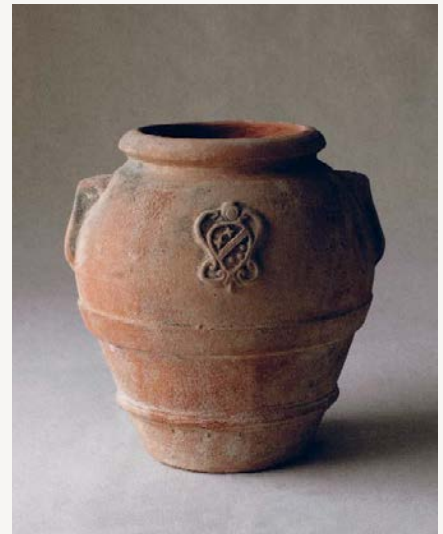




ORCETTO 110



ORCIO TOSCANO H125



W 35cm
H 40cm



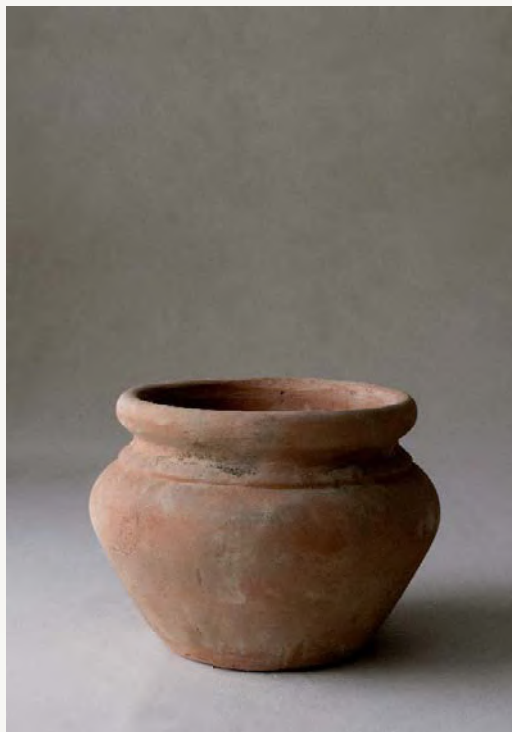
ORCIO TOSCANO 104



W 100cm
H 125cm
W 85cm
H 90cm
W 70cm
H 75cm
W 60cm
H 60cm

ORCIO ROMANO LISCIO 101

GIARA 116



W 45cm
H 70cm



W 42cm
H 32cm



BOTTIGLIA 218



W 60CM
H 150CM





Originally vases and pots were used to contain fruiting trees, which were moved every autumn into orangeries for winter. As gardens grew into places of enjoyment, the pots became more decorative with swags of fruit and the manorial coats of arms.

Taking inspiration from classical architecture and consideration for the growth of plants, we design a wide range of pots and vases to suit traditional and contemporary settings.

Vases

*The love of
gardening is a
seed once sown
that never dies.*

Gertrude Jekyll

VASO CANTINA 204



W 100cm
H 90cm
W 75cm
H 68cm
W 55cm
H 50cm
W 20cm
H 18cm



VASO COPPA 205



REMOVABLE BASE

W 75CM
H 65CM

W 60CM
H 52CM

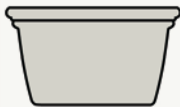


CASSETTA 171

EUROPA ALTO T57



W 70cm
H 40cm
D 42cm



W 40cm
H 80cm



CILINDRO ALTO T56



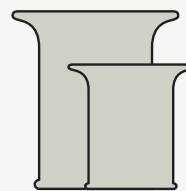
W 40cm
H 80cm



VASO IMPERO LISCIO 221

W 70cm
H 75cm

W 50cm
H 55cm

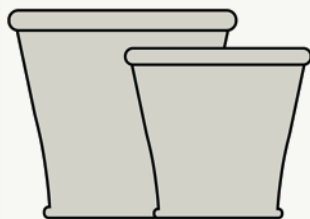


VASO COLONNA 192



W 82cm
H 78cm

W 72cm
H 65cm



MEZZA COLONNA 203



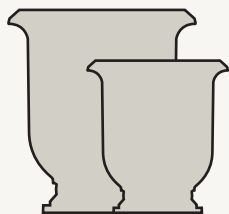
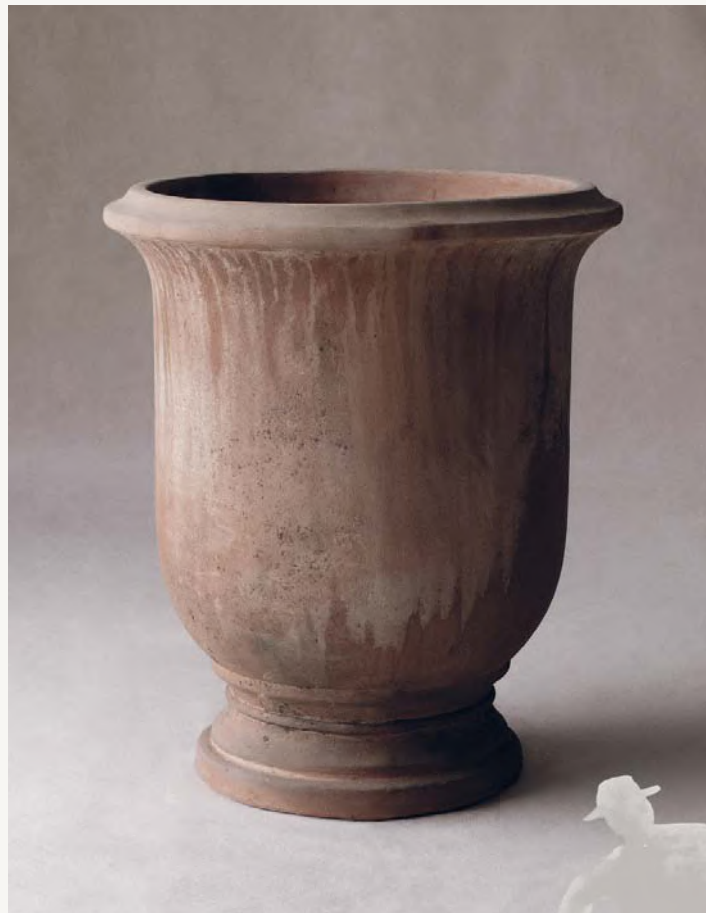
STANDS FLAT AGAINST A WALL

W 72cm
H 65cm
D 35cm





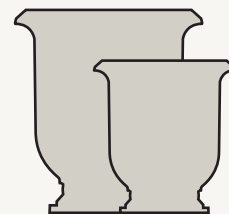
FRANCESE LISCIO 420



W 70cm
H 80cm
W 50cm
H 60cm



FRANCESE FESTONATO 421



W 70cm
H 80cm
W 50cm
H 60cm

CESTINO LISCIO 185



W 45cm
H 40cm
W 29cm
H 27cm



VASO FESTONATO 164



W 95cm
H 60cm
W 75cm
H 50cm
W 65cm
H 44cm





VASO GIARDINO 209



W 76cm
H 72cm

W 53cm
H 50cm

W 20cm
H 20cm

W 65cm
H 61cm

W 42cm
H 40cm



ANGOLIERA 223



FITS INTO A CORNER

W 48cm
H 57cm
D 50cm

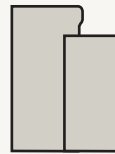


MEZZA CIRCOLARE 224



STANDS FLAT AGAINST A WALL

W 60cm
H 56cm
D 35cm
W 50cm
H 51cm
D 27cm



TINOZZA 214



W 75CM
H 75CM
W 65CM
H 65CM
W 55CM
H 55CM
W 45CM
H 45CM



VANVITELLI 206



W 60CM
H 82CM



CILINDRO GRANDE 212



W 120cm
H 100cm

W 100cm
H 80cm

W 80cm
H 65cm

W 60cm
H 50cm



VASO ANELLO T26



PILONE 320



W 53CM
H 53CM



W 52CM
H 70CM

W 40CM
H 60CM



VASO LISCIO 165



W 85cm
H 54cm
W 65cm
H 44cm
W 45cm
H 30cm
W 30cm
H 20cm



CILINDRO A BUGNOLO 169



W 52cm
H 45cm



CUBO 168



W 45CM
H 40CM



CATINO LISCIO 184

W 60CM
H 32CM

W 50CM
H 26CM

W 40CM
H 21CM

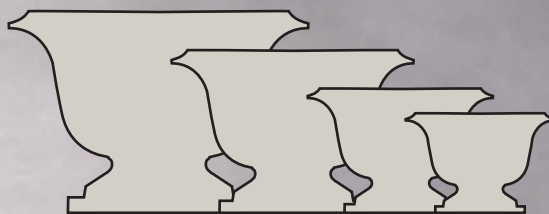




VASO ALZATA 250



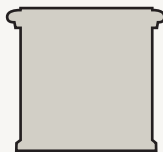
W 120CM
H 85CM
W 100CM
H 70CM
W 80CM
H 60CM
W 60CM
H 45CM



CUBO GRANDE 219



W 62cm
H 56cm



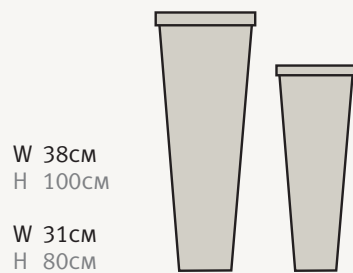
CONO ALTO T54



W 40cm
H 80cm



QUADRATO ALTO T55



CASSETTA FINESTRA 211



VASO CLASSICO 106



W 95cm
H 60cm

W 85cm
H 54cm

W 75cm
H 50cm

W 65cm
H 44cm

W 55cm
H 40cm

W 40cm
H 28cm

W 30cm
H 20cm





W 95CM
H 37CM
W 80CM
H 35CM
W 60CM
H 26CM
W 40CM
H 15CM

CIOTOLA 125

CUBE FEET OPTIONAL



VASO ARCHI 222



W 80CM
H 80CM

W 60CM
H 60CM

W 50CM
H 50CM

W 40CM
H 40CM

W 30CM
H 30CM

W 20CM
H 20CM



MEZZA CESTA 242

VASO CESTA 241



STANDS FLAT AGAINST A WALL



LION'S PAWS OPTIONAL

W 80cm
H 45cm
D 38cm



W 80cm
H 45cm



CONCA 170



W 52cm
H 43cm



VASO STEMMMA 215



W 80cm
H 80cm

W 60cm
H 60cm

W 50cm
H 50cm

W 40cm
H 40cm

W 30cm
H 30cm







Wall plaques have played an important historical role. For thousands of years tablets were carved to portray messages and fables about the gods and battles won.

In Italy coats of arms would be embedded into palazzo walls. The symbols detailed within the plaque represented a noble family, informed the public of their stature, their role in society and the connections between the nobility.

Plaques were also used for decorative effect. The square Mattones were suspended across ceiling timbers in the palazzi. This extravagance impressed visitors, showing the extent of the nobleman's wealth and strength.

Plaques

*My neighbour
asked if he could
use my lawnmower
and I told him of
course he could,
so long as he didn't
take it out of
my garden.*

Eric Morecambe



MEDAGLIONE 131
DIA 56CM



MATTONO FIORE 135c
W 29cm H 29cm



PANNELLO CAVALLI 136
W 70cm H 33cm



LEONE 219A
W 38cm H 48cm
WALL FOUNTAIN



PANNELLO CHERUBINO 197
W 38cm H 30cm
WALL FOUNTAIN



CORNICE ETRUSCA 174
W 50cm H 15cm



PANNELLO DANZATORI 139
W 43cm H 30cm



MATTONO CERVO 135E
W 29cm H 29cm



STEMMA CAVALIERE 173
W 38cm H 46cm



MATTONO NEPTUNA 135N
W 29cm H 29cm
WALL FOUNTAIN



MATTONO GIGLIO 135A
W 29cm H 29cm



MADONNA 187
W 27cm H 36cm



STEMMA PESCA 132
W 32cm H 46cm



STEMMA GIGLIO 133
W 39cm H 48cm



PANNELLO PAVONNE 220
W 52cm H 28cm



STEMMA G-CONCH 156
W 33cm H 44cm



ACQUASANTIERA 159
W 21cm H 42cm



PANNELLO BIGA 138
W 64cm H 29cm



LOGO 217
W 15cm H 20cm



MERIDIANA LEONI T45
W 48cm H 58cm
SOUTH FACING SUNDIAL WITH BRASS GNOMEN



MATTONE ROSONE 135d
W 29cm H 29cm



BORCHIA 158
Dia 23cm
WATER SPOUT/CEILING ROSE



PUTTI 176
W 21cm H 30cm



PLACCA DEI CHERUBINI 172
W 64cm H 56cm



STEMMA AQUILA 134
W 34cm H 44cm



AMANTI 328
W 30cm H 17cm



THE DIVER 329
W 29cm H 17cm



TEMPUS FUGIT 155
W 54cm H 66cm
SOUTH FACING SUNDIAL WITH BRASS GNOMEN



STIPITE 142
W 26cm H 76cm



LITTLE LOGO 217a
W 11cm H 8cm



GRECO 137
W 25cm H 32cm



The Italian Terrace collection includes a range of pieces to complement our vases and urns and give character to every garden or terrace setting.

The small pots can accompany a group of larger planters, offering a variety of planting ideas; obelisks, spheres and columns provide structure and formality; and not forgetting the necessary feet, which add height and individuality whilst performing the very important job of allowing drainage.

Ette
Ette

Gardening

*requires lots of
water, most of it
in the form of
perspiration.*

Lou Erickson

SPHERE & SOCLE T32



SPHERE
DIA 40CM
DIA 35CM
DIA 30CM

SOCLE
W 30CM
H 20CM



OBELISCO & BASE 228

AVAILABLE SEPARATELY



W 40CM
H 160CM

SMALL POTS, BASES & FEET



CAMPANA FIORI 124
W40cm H23cm D35cm



CAMPANA LISCIO 123
W40cm H23cm D35cm



LION'S PAWS 179



GERLETTA FIORI 120
W40cm H23cm D16cm



GERLETTA LISCIO 119
W40cm H23cm D16cm



CUBE FEET 179B



VASO MASCHERA 121
W30cm H13cm D20cm



OVALE LISCIO 122
W34cm H17cm D22cm



PLAIN RISERS 179c



VASO CILINDRO LISCIO 183
W36cm H28cm



ROUND BASE 194
W50cm H34cm
W40cm H29cm



QUADRATO BASE T21
W44cm H62cm
W44cm H42cm

BAGNANTE T039/T015



H 45CM
H 84CM

PUDICA T003



H 115CM

ÈBE T0033



H 153CM

DAVID T040



H 154CM

COLUMN T97



W 46CM (BASE)
H 233CM

Handmade



All our terracotta is hand made in Italy using age-old techniques. Our craftsmen work through a five-year apprenticeship to acquire the traditional skills required.

We blend Tuscan clays to achieve a pale colour and create a weathered texture using natural elements.

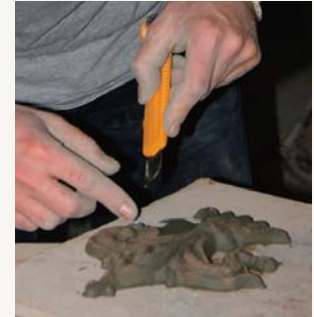
The clay is hand pressed into gesso moulds where the pot will remain until it can stand without support. We then remove the mould and the pot will air dry for many weeks. During this period the pot will be turned upside down frequently to ensure even drying and to avoid shrinkage. The kiln is then loaded and firing lasts for 36 hours.

This whole process takes up to six weeks of continuous care and attention, resulting in beautiful pieces you will admire and appreciate every time you look at them.





Bespoke



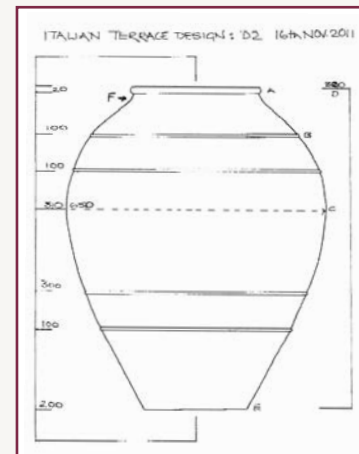
Making your mark

Your emblem, logo or coat of arms can be used to embellish a vase.

A seal is made from your artwork and pressed into the clay before firing.

We can also carve a relief plaque to add to the surface of a piece.

Echoing the past



Italian Terrace was commissioned to produce a number of oil jars to replicate those once in situ on the terrace steps of a heritage property in Highgate, London.

The only evidence of how the urns looked was a newspaper cutting of a visit by the then Princess Elizabeth to a tennis party held in the grounds of the house.

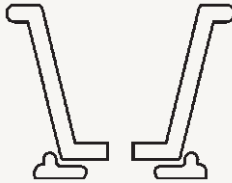
The Italianate terrace and gardens were designed by the Edwardian architect Harold Peto.



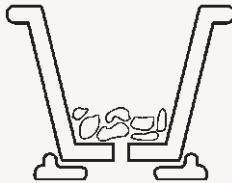
Pot Care

Since Italian Terrace began nearly 20 years ago we have planted up many pots. Our experience has taught us that plants and pots with poor drainage can suffer. Drainage is therefore vital and our tried and tested instructions below should always be followed for the health of plants, and the life of your pots.

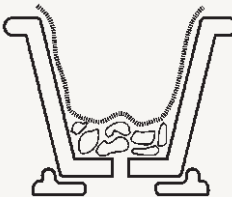
1. Raise the pot from the ground with pot feet or risers.



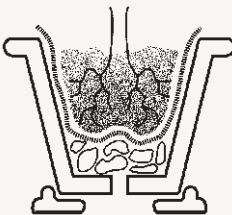
2. Place crock in the bottom of the pot to about a ¼ full. Fill up the gaps with shingle, which adds more weight to the base.



3. Put the liner, geotextile, above the crock and up the inside of the pot.



4. Add some soil and shingle to cover the base of the liner and spread out. Add your plants soil and slow release feed.



We make our pots to remain in the garden year round including the winter months. With dramatic changes in climate now a regular feature, please take extra care with your pots and plants against severe drops in temperature and move or secure if in an area of very high winds. Our detailed instructions can be found on our website or sent by post.



THE SMALL PRINT

Get in touch

T: +44 01284 789666

E: info@italianterrace.co.uk

W: italianterrace.co.uk

Italian Terrace Ltd, Pykards Hall, Rede
Bury St Edmunds, Suffolk IP29 4AY

Admire the pots

Please contact us to arrange a visit to view our showroom and display area, where our collection is available to purchase. Exhibition dates and other display area information is on our website.

To have and to hold

We carefully deliver all over the UK using a 'door to garden' service. Allow 14 days from order. Smaller items can be sent via speedy courier. A signature on delivery is required and for very large orders of pots we will need to discuss with you whether special provision is required for access. Please call for carriage charges or check the current scale on the website.

Paper or plastic

We accept most major credit cards, BACS payment and cheques. All payments to be processed prior to despatch.

Vital statistics

Each piece of Italian Terrace terracotta is a soft, mellow colour with an individual character and a wonderful aged and weathered texture. As they are handcrafted you may see a slight variation in texture, colour tone and size.

Our terracotta is extremely strong and durable providing our instructions have been followed as explained on page 57.

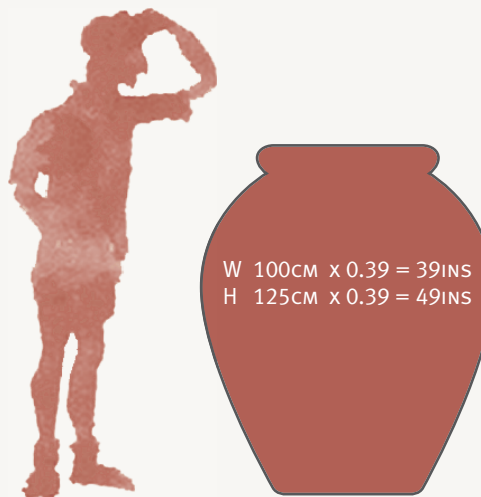
Full pot care and plaque hanging instructions are available. Please contact us if you have any questions; we are very happy to help you.

Here, there and everywhere


We deliver our pots all over the world and hold stock in the States at our showroom in Connecticut. For more information on visiting Italian Terrace in the US, exhibitions, prices, product availability and delivery charges all around the globe email us on info@italian-terrace.com

You say tomato

Metric measurements in this brochure are easily converted to inches by multiplying the centimetre figure by 0.39, or simply go to italian-terrace.com to view imperial measurements.







Watercolours:
Jane Brettell

Design: Lynne and
Rob Custance
custancedesign.com

Photography:
Colin Turner
solidair.org.uk

INDEX

OIL JARS

Bottiglia	13	Orcetto	10	Orcio Romano Manici	4	Portaombrello	7
Coppa Romana Manici	4	Orcio Grande Liscio	8	Orcio Toscano	11	Primavera	7
Giara	12	Orcio Romano Liscio	12	Orcio Toscano Liscio	5		

VASES

Angoliera	26	Ciotola	37	Mezza Circolare	26	Vaso Classico	36
Cantina	16	Conca	40	Pilone	29	Vaso Colonna	20
Cassetta	18	Cono Alto	34	Quadrato Alto	35	Vaso Coppa	17
Cassetta Finestra	35	Cubo	31	Tinozza	27	Vaso Festonato	23
Catino Liscio	31	Cubo Grande	34	Vanvitelli	27	Vaso Giardino	25
Cestino Liscio	23	Europa Alto	18	Vaso Alzata	33	Vaso Impero Liscio	19
Cilindro Alto	19	Francese Liscio	22	Vaso Anello	29	Vaso Liscio	30
Cilindro a Bugnolo	30	Francese Festonato	22	Vaso Archi	38	Vaso Mezza Cesta	39
Cilindro Grande	28	Mezza Colonna	20	Vaso Cesta	39	Vaso Stemma	40

PLAQUES

Acquasantiera	45	Madonna	44	Pannello Biga	45	Stemma Cavaliere	44
Amanti	45	Mattone Cervo	44	Pannello Cavalli	44	Stemma G-Conch	44
Borchia	45	Mattone Fiore	44	Pannello Cherubino	44	Stemma Giglio	44
Cornice Etrusca	44	Mattone Giglio	44	Pannello Danzatori	44	Stemma Pesca	44
Greco	45	Mattone Neptuna	44	Pannello Pavonne	44	Stipite	45
Leone	44	Mattone Rosone	45	Placca Dei Cherubini	45	Tempus Fugit	45
Little Logo	45	Medaglione	44	Putti	45	The Diver	45
Logo	45	Meridiana Leoni	45	Stemma Aquila	45		

ETC, ETC

Campana Fiori	49	Gerletta Liscio	49	Quadrato Base	49	Statua Ebe	50
Campana Liscio	49	Lion's Paws	49	Round Base	49	Statua Pudica	50
Column	51	Obelisco & Base	48	Sphere and Socle	48	Vaso Cilindro Liscio	49
Cube Feet	49	Ovale Liscio	49	Statua Bagnante	50	Vaso Maschera	49
Gerletta Fiori	49	Plain Risers	49	Statua David	51		

